

# CAMPUS-WIDE SMART METERING PROGRAM (CRP)



## PROJECT DESCRIPTION

Water scarcity affects more than 40% of the world's population. In addition, 14% of the world's population did not have access to electricity in 2017 (according to the EPA). Villanova has the ability to use electricity and run water whenever needed. Villanova's usage will be better understood with the installation of electric and water smart meters on campus to track utility usage more granularly and use this information to improve efficiency and install greener technologies. This project will help Villanova understand and reduce its water usage impact.

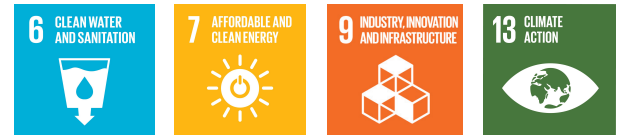
## PROJECT UPDATES

Energy metering will be installed before water metering. GOBI may be used as a 3rd party for tracking and managing data.

## PROJECT OUTCOMES

- Install campus wide meters, see "campus wide smart meter project"
- Plan for building LED lighting replacements based on planned upgrades to buildings
- Improve the energy efficiency of equipment
- Reduce energy intensity from HVAC

## AFFECTED METRICS



Metric	Metric Description	2021 Key Results
6.1	Total potable water use per year.	Sub-meter the potable water consumption of the ten highest consumption buildings on campus.
7.2	Campus's energy intensity (site energy).	Develop a plan to reduce energy intensity.
9.2	Scope 1 and 2 net greenhouse gas emissions.	Develop a plan to reduce Scope 1 and 2 emissions to meet the 1.5 IPCC report by 2030. Buy at least 10% electricity from renewable sources.
13.1	Scope 1 and 2 net greenhouse gas emissions.	