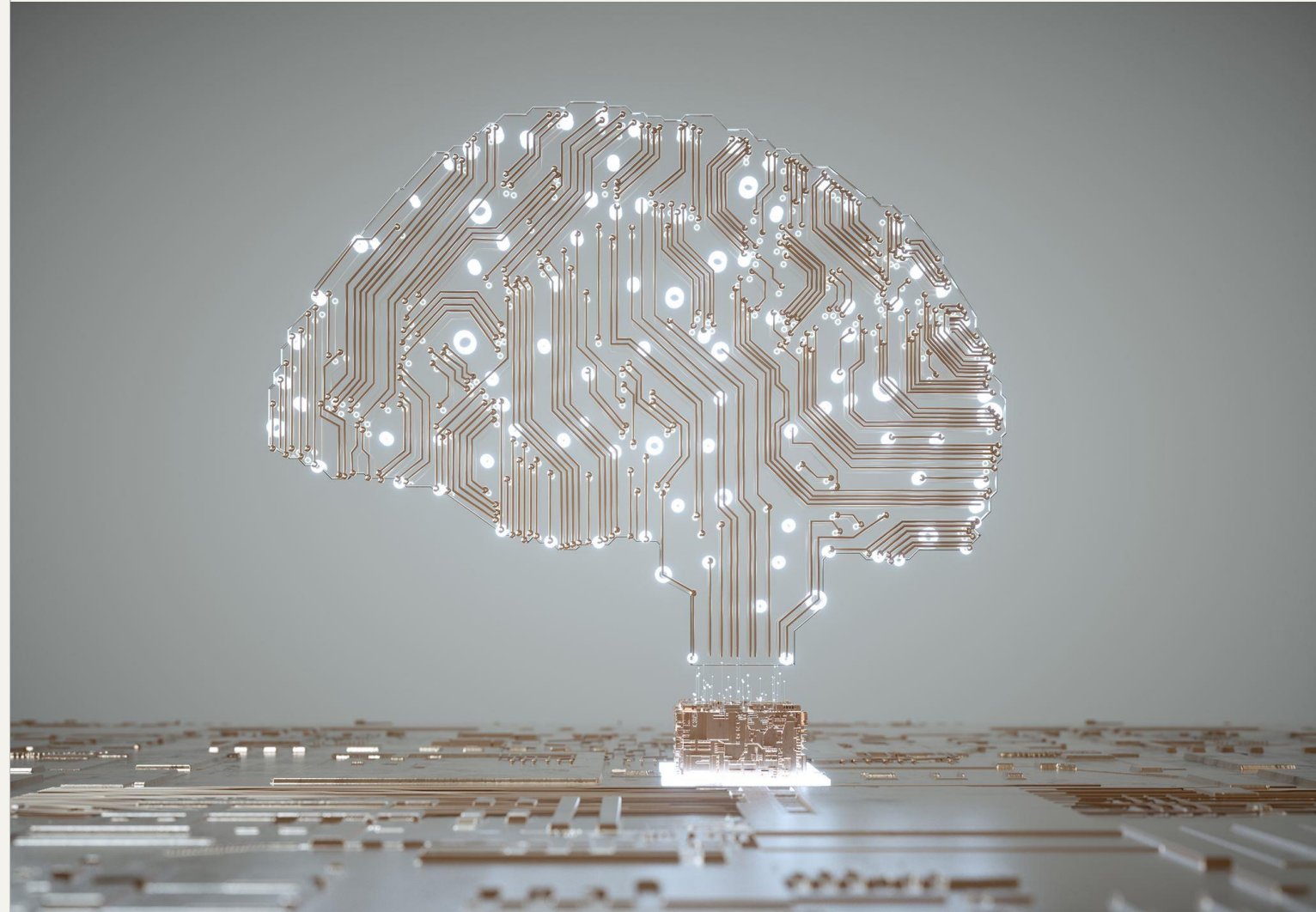


# The Ethical Use of Artificial Intelligence in the *Augustinian* Tradition at Villanova University

Exploring moral principles guiding AI  
through classical philosophy



# PURPOSE AND SCOPE

# Ethical and Prudent Use of Artificial Intelligence



## Foundational Ethical Framework

Grounds AI use in Catholic Social Teaching and Augustinian tradition prioritizing truth and human dignity.

## Scope Across University Domains

Ethical expectations apply in teaching, research, and administration ensuring AI supports without replacing human roles.

## Human Oversight and Accountability

AI remains an instrumental tool subordinate to human wisdom, ensuring accountability and stewardship in decision-making.

## Balancing Innovation and Values

The framework encourages embracing potential while guarding against misuse to align with the University's mission.

HUMAN DIGNITY  
AND THE PRIMACY  
OF THE HUMAN  
PERSON

# Respect for Human Agency and Judgment

---



## Upholding Human Dignity

AI must serve human persons, supporting judgment and agency without replacing or diminishing them.



## Role of Educators and Researchers

Faculty and scholars retain full responsibility for mentoring, evaluation, and ethical decision-making regarding AI support.



## Human Oversight in Decisions

Automated systems must not make binding decisions without human review and accessible appeal processes.

THE COMMON GOOD  
AND THE ACADEMIC  
COMMUNITY

# Advancing Shared Flourishing Through AI



## **AI for Common Good**

AI adoption must benefit the entire community by promoting shared flourishing and equitable access to knowledge.

## **Inclusive Educational AI**

AI tools should support inclusive learning environments and assist diverse student needs transparently and sensitively.

## **Ethical AI in Research**

AI-supported research should address ethical and social challenges, aligning with public good and societal benefit.

## **Transparent AI Administration**

AI systems in administration must enhance service delivery while preserving transparency and communal trust.

SUBSIDIARITY,  
RESPONSIBILITY,  
AND INSTITUTIONAL  
HUMILITY

# Human Accountability in Decision-Making



## **Human Authority and Responsibility**

Decisions involving AI must remain under clear human authority, emphasizing responsibility and moral judgment.

## **Faculty's Role in Education**

Educators retain full responsibility for curricular decisions and educational outcomes despite AI support.

## **Ethical Oversight in Research**

Research involving AI requires ethical approvals and rigorous human oversight to ensure integrity.

## **Institutional Accountability**

Leadership holds accountability for AI-supported decisions, promoting caution and institutional humility.

SOLIDARITY,  
JUSTICE, AND CARE  
FOR THE  
VULNERABLE

# Protecting Equity and Mitigating Bias



## Commitment to Fairness

AI use must avoid increasing inequality by prioritizing fairness and accessibility for vulnerable populations.

## Bias Evaluation

All AI systems require thorough evaluation for bias, social impact, and ethical concerns before deployment.

## Education Equity

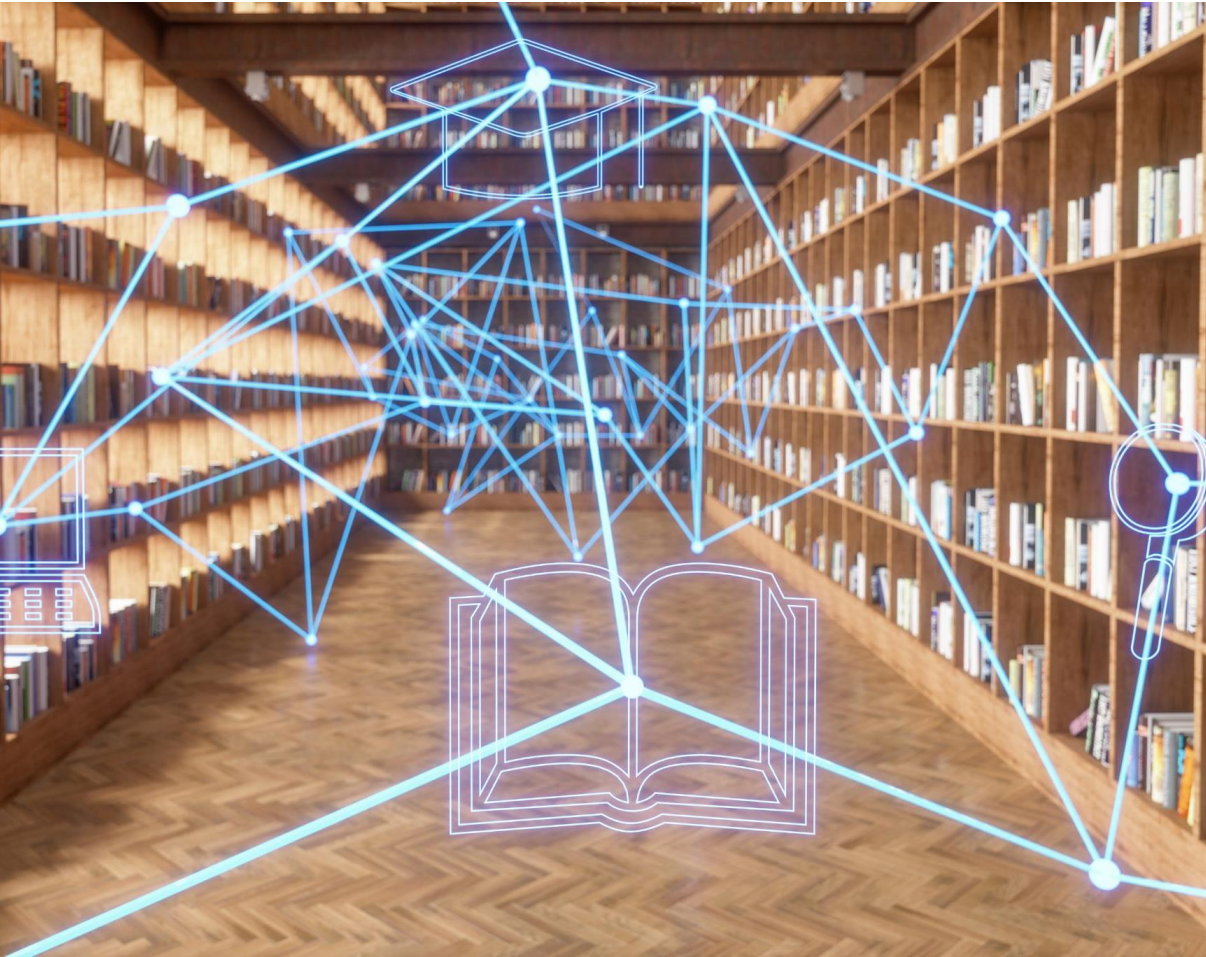
AI tools in teaching should not disadvantage students due to technology access or socioeconomic factors.

## Transparency and Accountability

Ethical AI requires transparency, accountability, and regular assessments to build trust and ensure justice.

TRUTH, INTEGRITY,  
AND THE  
FORMATION OF  
WISDOM

# Upholding Academic Honesty and Transparency



## Academic Integrity and Disclosure

AI-generated or assisted work must be disclosed to maintain authorship, accountability, and learning integrity.

## Ethical AI Literacy in Teaching

Students should learn responsible AI use, understanding its limits and avoiding plagiarism.

## Transparency in Research and Administration

Researchers must disclose AI use and administrators ensure accuracy to prevent misinformation.

## Promoting Truth and Wisdom

The policy emphasizes truth and integrity to support authentic knowledge and ethical formation.

STEWARDSHIP,  
SUSTAINABILITY, AND  
PRUDENTIAL  
JUDGMENT

# Responsible and Sustainable AI Adoption

## Ethical AI Assessment

AI adoption requires thorough ethical evaluation and ongoing review to ensure long-term community and environmental well-being.

## Responsible Use in Education and Research

AI tools in teaching and research should enhance learning and reflect responsible innovation aligned with institutional values.

## Sustainable Administrative Practices

Procurement and governance decisions must prioritize sustainability, data ethics, and alignment with organizational values.

## Continuous Stewardship and Reflection

Prudent AI stewardship requires ongoing reflection, humility, and adaptation to ensure ethical leadership.

